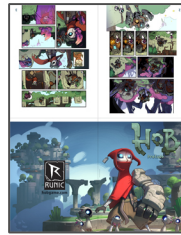


HOB: Prelude MINI-COMIC

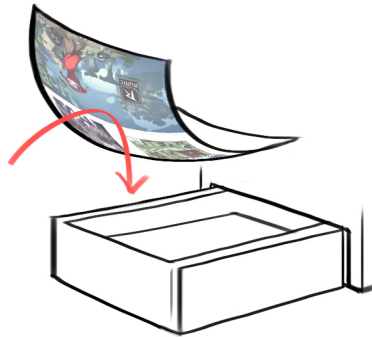
Print-at-home instructions

- PRINTING -

- 1 - Print layout 1 on white 8.5" x 11" paper



- 2 - Take that paper and lay it face-down in the printer's paper tray



- 3 - Print layout 2 on the opposite side of layout 1. We want the comic pages to be on the same end!



- ASSEMBLING -

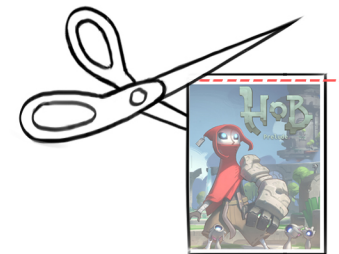
- 4 - Fold the page into 4ths along the lines



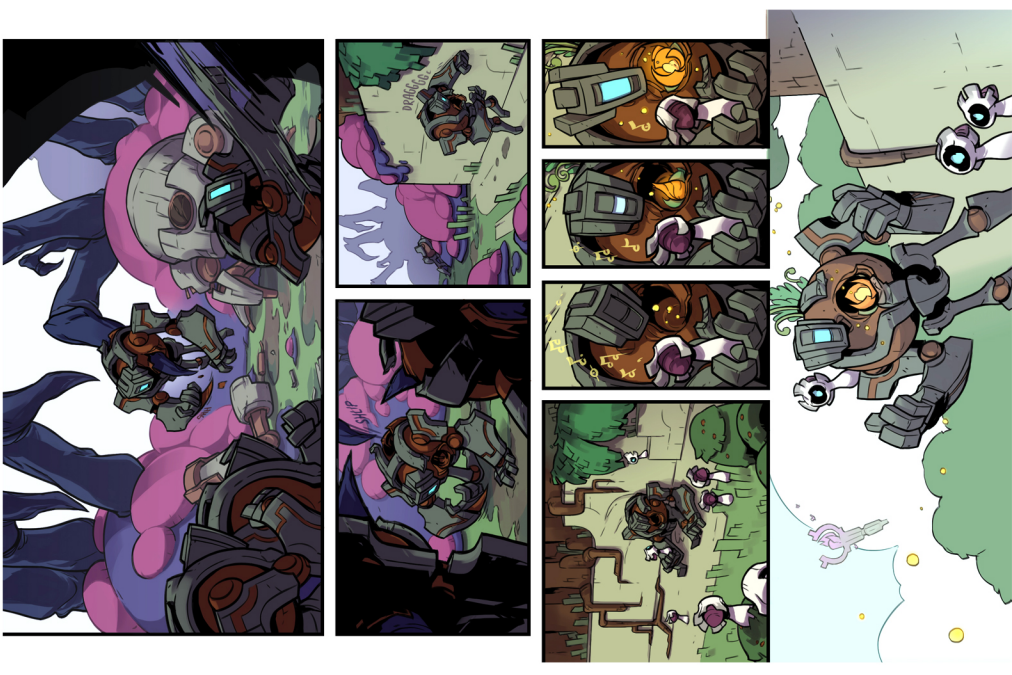
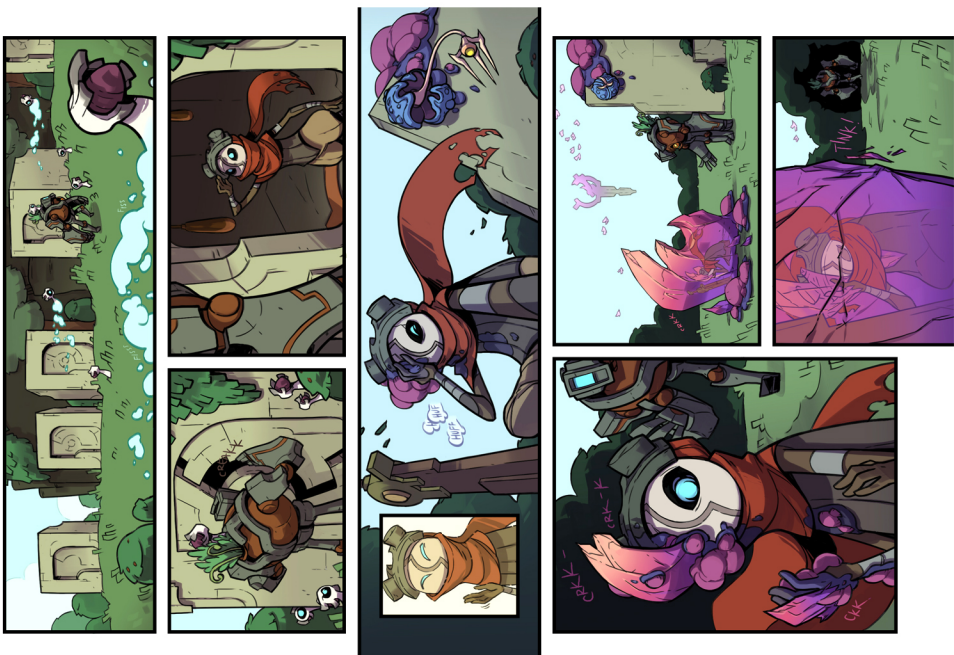
- 5 - Place one staple in the middle, along the short line

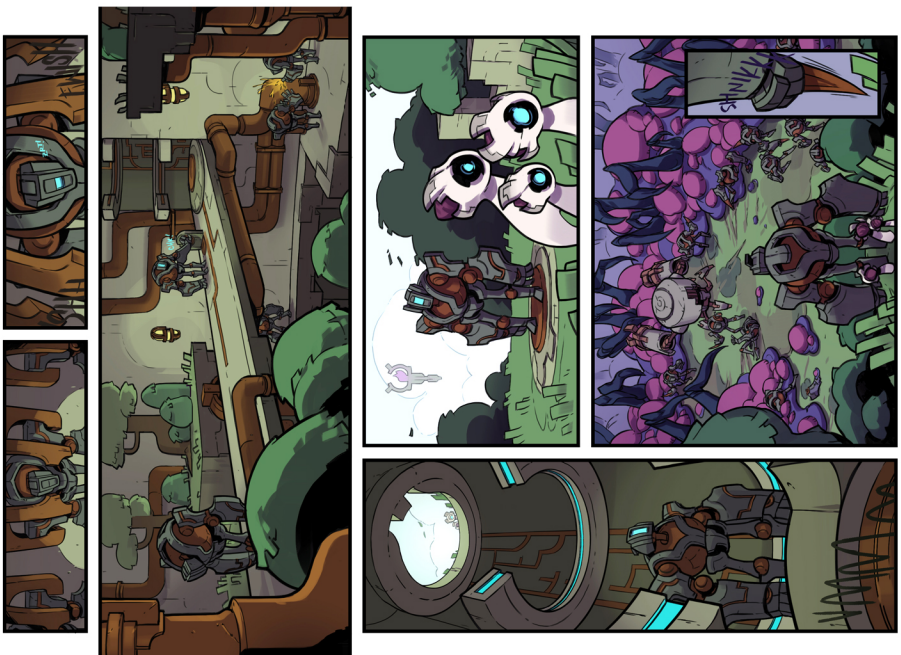


- 6 - Cut along the top edge to separate the pages



- 7 - Enjoy your minicomic!





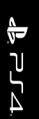
Make it home.

It's your chance.

For



STEAM



PS4



GOG.COM

Available Now